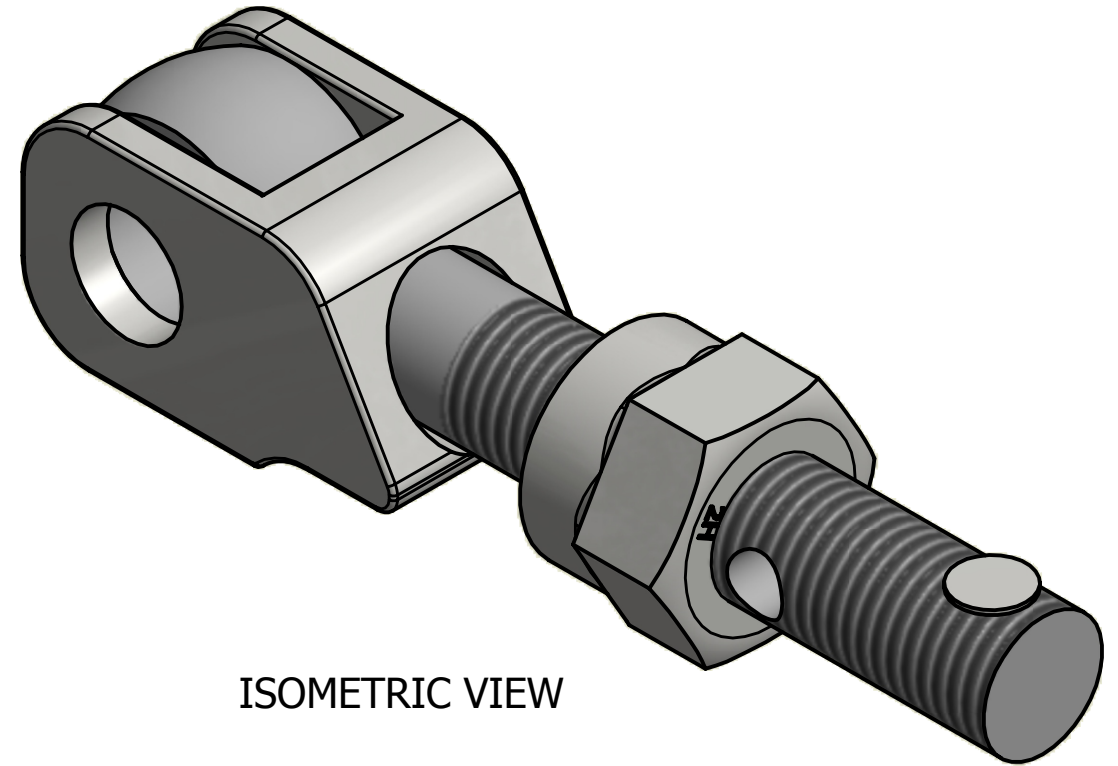
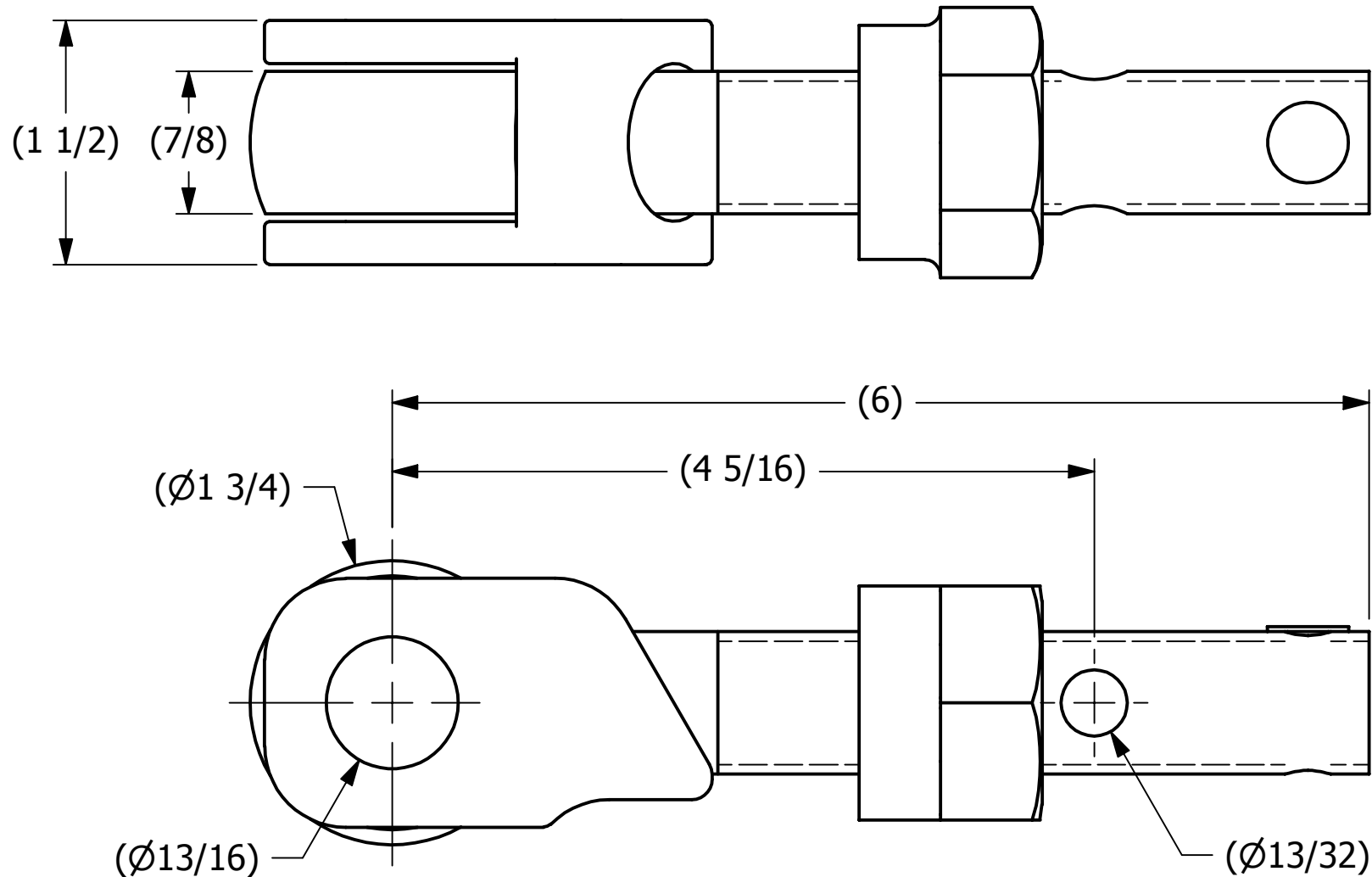


SALES DRAWING

SALES DRAWING



ISOMETRIC VIEW

B	RJP	10-30-15	UPDATED TO CURRENT STANDARDS	
A	AJB	5-5-06	CHANGED MATERIAL SPEC.	
REV	BY	DATE	DESCRIPTION	
<div><div><div>S</div></div><div>SALCO PRODUCTS, INC.</div></div>				
PART NAME: EYEBOLT ASSEMBLY 7/8"X6"				
MATERIAL: CARBON STEEL, ASTM A449 TYPE 1				
PROJECT #:		WAG0037	SHEET #:	1 OF 1
			SCALE:	1:1
DRAWING #:		PART #:		
B18204		EB786XSNHAG5SC		

UNLESS OTHERWISE SPECIFIED DIMENSIONAL TOLERANCES FRACTIONAL: $\pm 1/16$ X.XX: $\pm .03$ X.XXX: $\pm .015$ ANGULAR: $\pm 1^\circ$ DEBURR ALL SHARP EDGES. ALL MACHINED SURFACES TO HAVE A 125 RMS FINISH UNLESS NOTED OTHERWISE. THIRD ANGLE PROJECTION	DRAWN BY:	CHL
	CHECKED BY:	ACC
	PROTOTYPE BY:	CHL
	PROTOTYPE DATE:	8/12/2003
	APPROVED FOR PRODUCTION BY:	ACC
	PRODUCTION DATE:	8/12/2003

THIS PRINT, PROPERTY OF SALCO PRODUCTS INC., CONTAINS PROPRIETARY INFORMATION AND MUST NOT BE COPIED, REPRODUCED, OR USED DETRIMENTALLY TO OUR INTEREST.